

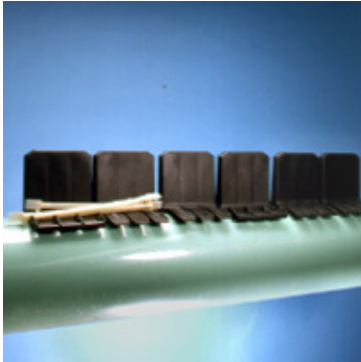


## Basic Installation Procedure

### PRECAUTIONS

**Always Use Appropriate Protective Safety Wear and Glasses!**

1. Always wear protective safety glasses, especially in low temperatures.
2. Keep Ranger II segments and slide-locks in a warm environment while awaiting installation in colder climates.
3. Under hot installation conditions, allow the product to age a couple of hours at ambient temperature prior to assembly.



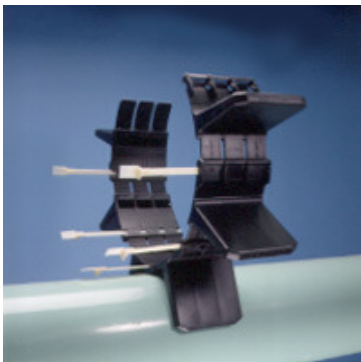
1. Check to make sure you have all segments and Slide-Locks as recommended by ordering procedure.



2. Take the segments and align the buckles. Insert the buckles 1/4 of the way into the slots.



3. Locate directional arrow on segment and insert Slide-Lock until the tip exits the end of the segment.



4. Continue the process from the previous step until all segments are put together. You are now ready to wrap the Ranger II around the pipe.  
**NOTE:** In tight installation areas, you might need to break the belt into two parts and then wrap the Ranger II around the pipe.



5. Align the buckles and lock into place. Take the final Slide-Lock and slide completely into place.



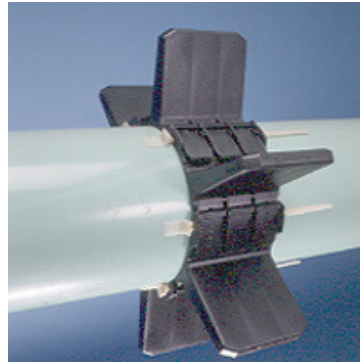
6. Insert all Slide-Locks as far as possible by hand. Complete tightening by lightly tapping each Slide-Lock with a light rubber headed hammer, while holding the Slide-Lock against the pipe.



7A. To tighten Ranger II securely to carrier pipe, back Slide-Lock completely out of the slot. If needed, push segments together by hand.



7B. Re-insert Slide-Locks completely into segment by lightly tapping Slide-Lock back into position while holding the Slide-Lock against pipe.



7. Continue steps 7A and 7B until Ranger II is secure against carrier pipe and unable to move.

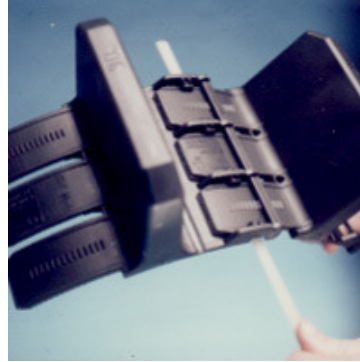
**Trouble Shooting Installation Procedure**



**Broken Slide Lock:**  
A) If a Slide-Lock should break during installation, remove and replace with a new Slide-Lock.



B) Remove Slide-Lock by backing it out, do not pull it through to remove the broken piece. Tap broken piece back out.



C) Take a Slide-Lock and insert in the opposite direction of the arrows. Push until you can grab the broken piece and remove.



**Slide Lock will not insert completely:**  
D) If the Slide-Lock does not completely lock into place the following may have occurred. Two or more segments may have engaged completely. To rectify, back Slide-Lock out and readjust segments by pulling them apart by hand. Reinsert Slide-Lock and adjust tightness of the spacer with another segment.